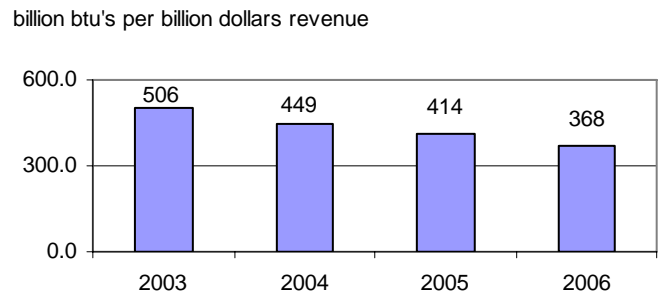
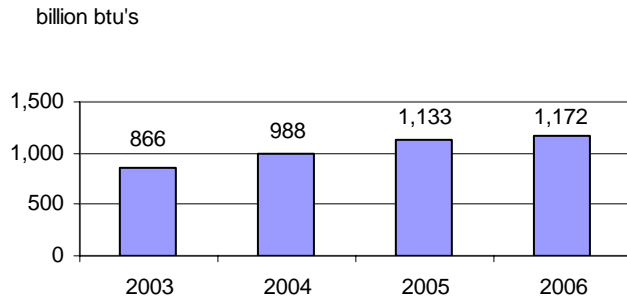


## Environmental Impact

Each impact is expressed as a total impact as well as normalized to revenue, which serves to reflect our rapidly expanding operations.

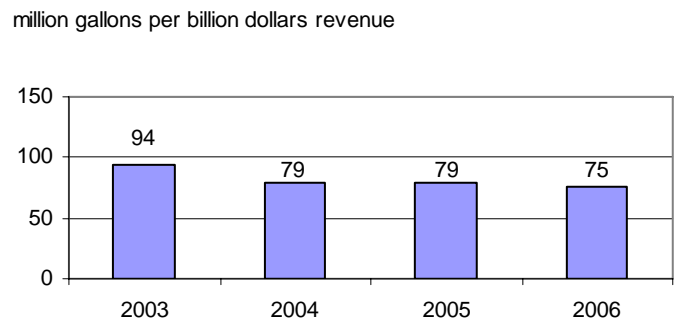
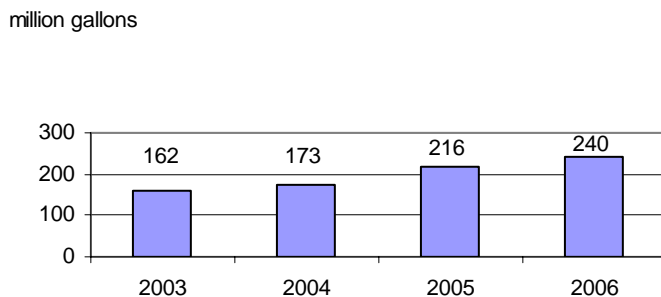
### Energy Use

Energy use impacts the environment due to the depletion of limited supplies of fossil fuels as well as the pollution produced by the recovery, refining, transportation, and combustion of fuel to generate electricity or steam. Genzyme tracks the total quantity of electricity, natural gas, steam and oil purchased for each facility, and expresses the total energy in common units of Btu.



### Water Use

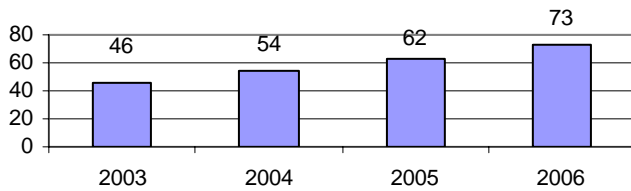
Water is a precious natural resource, essential to all life on earth. Genzyme's pharmaceutical and health care products manufacturing operations require significant amounts of highly purified water. Genzyme tracks process water used by operations, non-process water used by employees, and irrigation for our landscaping.



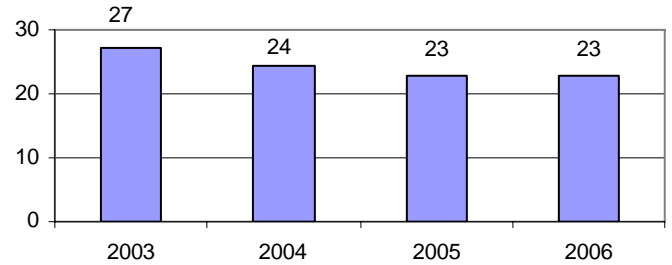
## Air Emissions

Air pollution and related global climate change are major concerns for the health of the planet. Two significant contributors to air pollution are carbon dioxide (CO<sub>2</sub>), which contributes to global warming, and volatile organic compounds (VOC), which contributes to the formation of smog. CO<sub>2</sub> emissions are tracked from on site combustion of fuel and VOC is tracked from all manufacturing and laboratory operations.

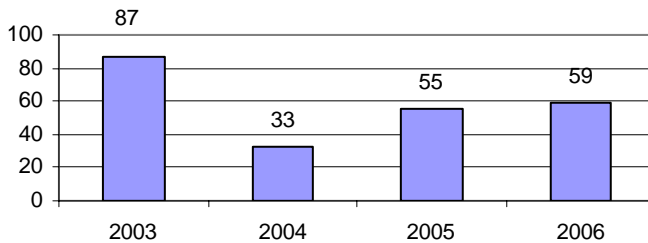
million pounds carbon dioxide (CO<sub>2</sub>)



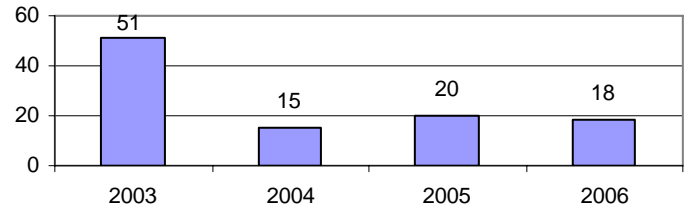
million pounds CO<sub>2</sub> per billion dollars revenue



thousand pounds volatile organic compounds (VOCs)



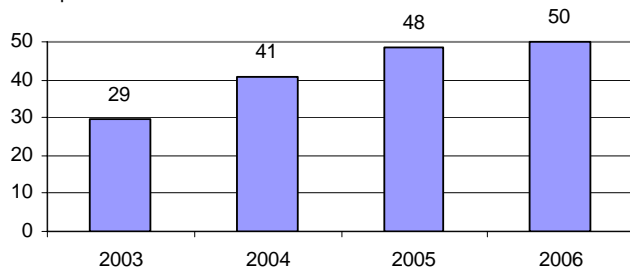
thousand pounds VOCs per billion dollars revenue



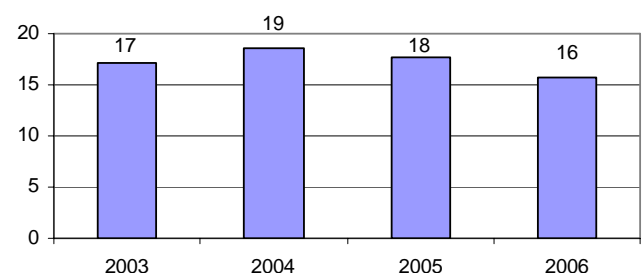
## Chemical Waste

Chemical waste is generated as a byproduct of manufacturing, quality control testing or research activity. The management of chemical waste is highly regulated and costly. Each Genzyme site measures and reports the quantity of both regulated and non-regulated chemical waste that is shipped offsite for appropriate treatment, recycling or disposal.

million pounds



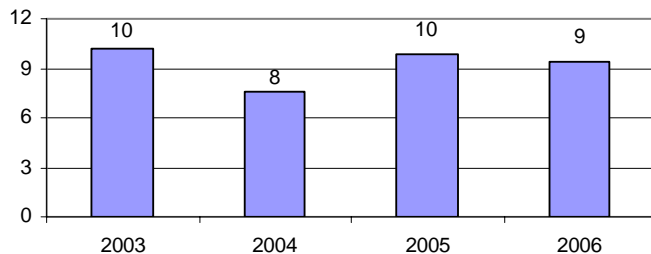
million pounds per billion dollars revenue



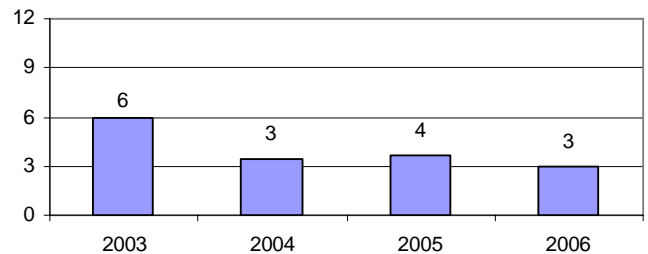
## Solid Waste

Solid waste is one of the most visible forms of environmental pollution. Genzyme defines a broad range of solid waste and includes materials that range from municipal garbage to industrial wastes such as biological or other regulated waste. Each Genzyme site reports the total quantity of solid waste that is generated as well as the quantity of each type of solid waste that is recycled. The following charts do not include construction and demolition (C+D) debris, a special non-routine category of solid waste that is discussed below.

million pounds



million pounds per billion dollars in revenue



With the many construction projects occurring worldwide since 2003, Genzyme has recycled over six million pounds of C+D debris. The following table shows the quantity of construction and demolition debris diverted from landfills since 2003.

Site	2003 C+D debris	2004 C+D debris	2005 C+D debris	2006 C+D debris
Allston, MA	--	--	--	89,788 lb
Waltham MA	--	3,626,000 lb	--	--
Geel Belgium	--	661,380 lb	--	5,077 lb
Ridgefield NJ	--	578,200 lb	620,800 lb	402,000 lb
Kent UK	--	220,460 lb	--	--
Allston MA	76,600 lb	99,070 lb	38,600 lb	38,600 lb
Haverhill UK	--	--	36,553 lb	
74-76-80 New York Avenue, Framingham, MA	11,710 lb	12,600 lb	9,880 lb	21,180 lb
51 New York Avenue, Framingham, MA	3,370 lb	--	--	--
Kendall Square, Cambridge, MA	11,270 lb	--	--	8,180 lb
78 New York Avenue, Framingham, MA	--	3,200 lb		